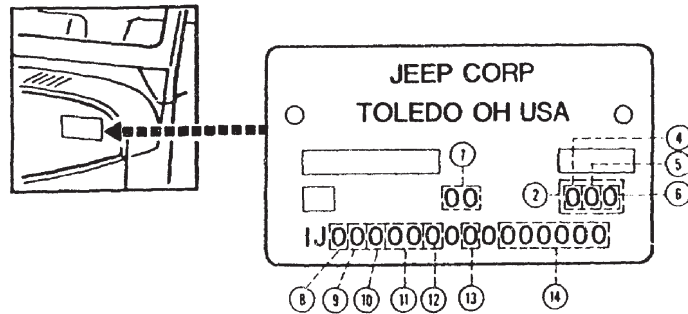
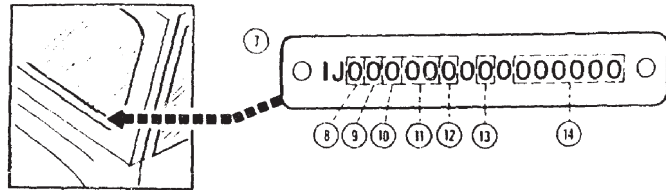


1981-86 CJ

1981-86 CJ



1 PAINT CODE

2 INTERIOR TRIM COLOR/MATERIAL CODES

- 1 = Black
- 3 = Blue (1981)
- 3 = Slate Blue (1982-1983)
- 4 = Garnet (1983-1986)
- 5 = Nutmeg (1981-1985)
- 6 = Beige (1981-1983)
- 6 = Almond (1984-1986)
- 9 = Honey
- B = Bucket Seat, Low Back (1985)
- B = Bucket Seat, High Back (1986)
- E = Bucket Seat, High Back (1981-1985)
- F = 1 3-2 3 Seat

- A = Vinyl Upholstery - Linen
- B = Vinyl Upholstery - Denim
- E = Cloth Upholstery - Western Weave
- J = Vinyl Upholstery - Cara (W. Italian Purse Vertical Straps) (1981-1983)
- J = Vinyl Upholstery - Italian Purse (W. Vertical Straps) (1983-1986)
- K = Cloth Upholstery - Western Weave (1982)
- L = Leather Upholstery
- N = Vinyl Upholstery - Cara (W. Italian Purse Vertical Straps) (1982 Jamboree)

7 VEHICLE IDENTIFICATION (VIN)

- C = Multipurpose Vehicle
- D = Incomplete Vehicle
- E = Export, Left Hand Drive
- B = 2.5L(151 C.I.D.) 4cyl. Gasoline Eng.(GM)
- C = 4.2L(258 C.I.D.) 6cyl. Gasoline Eng.
- F = 2.4L(145 C.I.D.) 4cyl. Diesel Eng.(ISUZU)
- H = 5.0L(304 C.I.D.) V-8 Eng.
- P = 2.1L(128 C.I.D.) 4cyl. Diesel Eng.(RENAULT)
- U = 2.46L(150 C.I.D.) 4 cyl. Gasoline Eng.(AMC) (Domestic)
- Y = 2.46L(150 C.I.D.) 4cyl. Gasoline Eng.(AMC) (Export)

- E = Auto. Trans. Part Time Transfer Case
- F = 5-Speed Man. Trans. Part Time Transfer Case
- L = 5-Speed Man. Trans. Part Time Transfer Case
- M = 4-Speed Man. Trans. Part Time Transfer Case
- N = 5-Speed Man. Trans. Part Time Transfer Case
- X = Part Time Transfer Case

- 11 85 = CJ-5 2Dr. Open Body. 84" WB
- 86 = CJ-6 2Dr. Open Body. 104" WB
- 87 = CJ-7 2Dr. Open Body. 94" WB
- 88 = CJ-8 (Scrambler)2Dr. Open Body. 104" WB

- 12 A = 3750 LB. GVW
- E = 4150 LB. GVW
- B = Model Year 1981
- C = Model Year 1982
- D = Model Year 1983
- E = Model Year 1984
- F = Model Year 1985
- G = Model Year 1986

- 14 A sequential serial number assigned by the vehicle manufacturer beginning with 000 001 each model year.

15 ENGINE IDENTIFICATION

- First Position
- 1 = 1981
- 2 = 1982, ETC. Thru
- 6 = 1986
- Second Position
- 01 = January
- 02 = February, ETC. Thru
- 12 = December
- Third Position
- B = 2.5L Four Cyl., 2 BBL. Carb. (GM)
- C = 4.2L Six Cyl., 2 BBL. Carb.
- H = 5.0L V-8, 2 BBL. Carb.
- M = 4.2L Six Cyl., 2 BBL. Carb. (V.A.M.)
- U = 2.46L Four Cyl., Single BBL. Carb. (AMC) (Domestic)
- Y = 2.46L Four Cyl., Single BBL. Carb. (AMC) (Export)
- Fourth Position
- 01 = Day of the Month

To identify odd size engines, the following letter coding will be used. On 4.2L Six, this code is stamped on the oil filter boss next to the block. On 5.0L V-8, this code is stamped on the upper half of the Engine Build Code Plate.

- B = .010 Oversize Cylinder Bores
- C = .010 Oversize Camshaft Bores
- M = .010 Undersize Main Bearings
- P = .010 Undersize Pins
- PM = .010 Undersize Pins and Main Bearings